



LEFT SIDE ELEVATION

SCALE: 1/4"=1'-0"



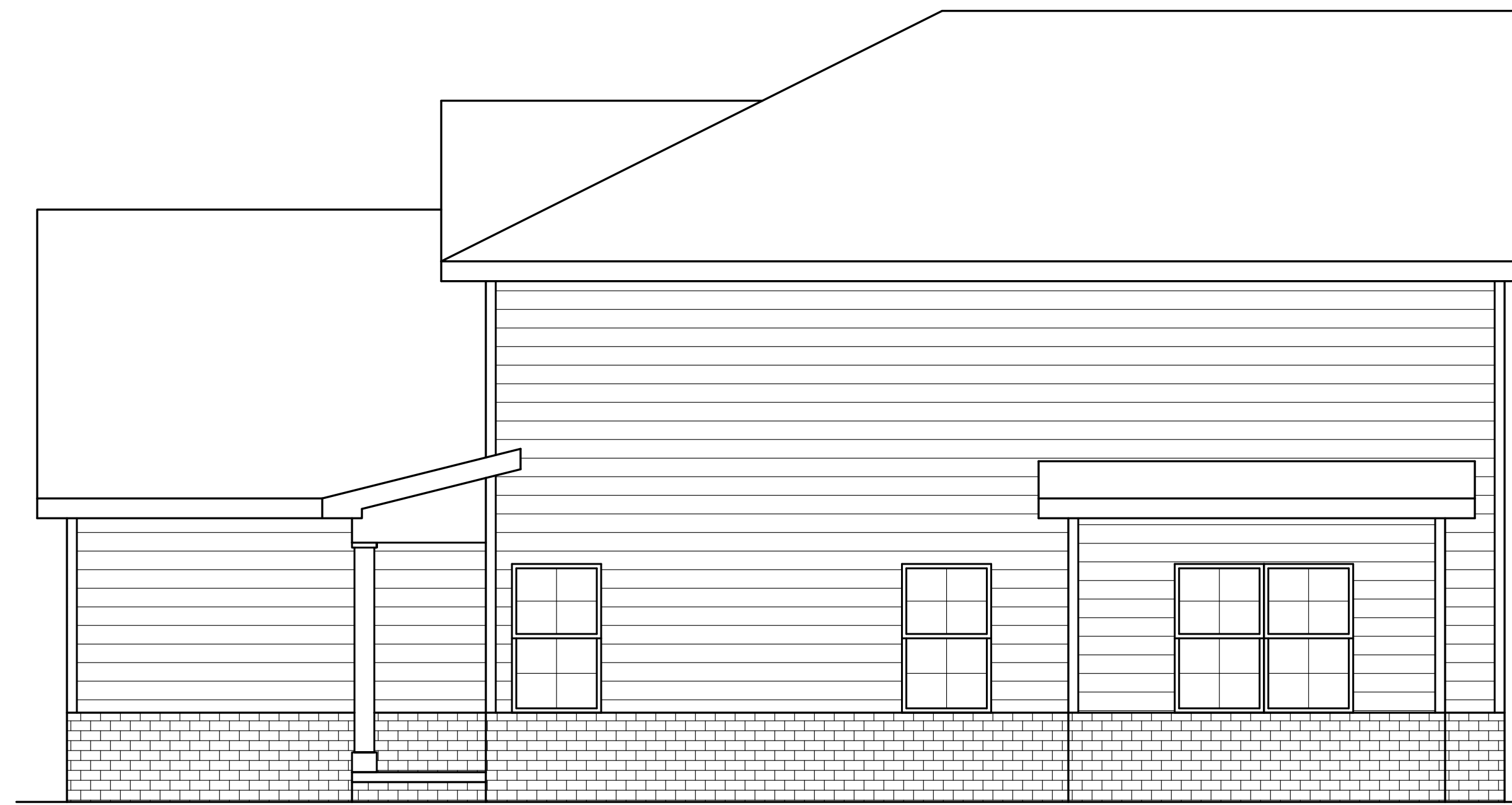
REAR ELEVATION

SCALE: 1/4"=1'-0"



FRONT ELEVATION

SCALE: 1/4"=1'-0"



RIGHT SIDE ELEVATION

SCALE: 1/4"=1'-0"

OLD NASHVILLE HWY 6711
 LOT 5 (6719)
 SANTA MARIA +4B

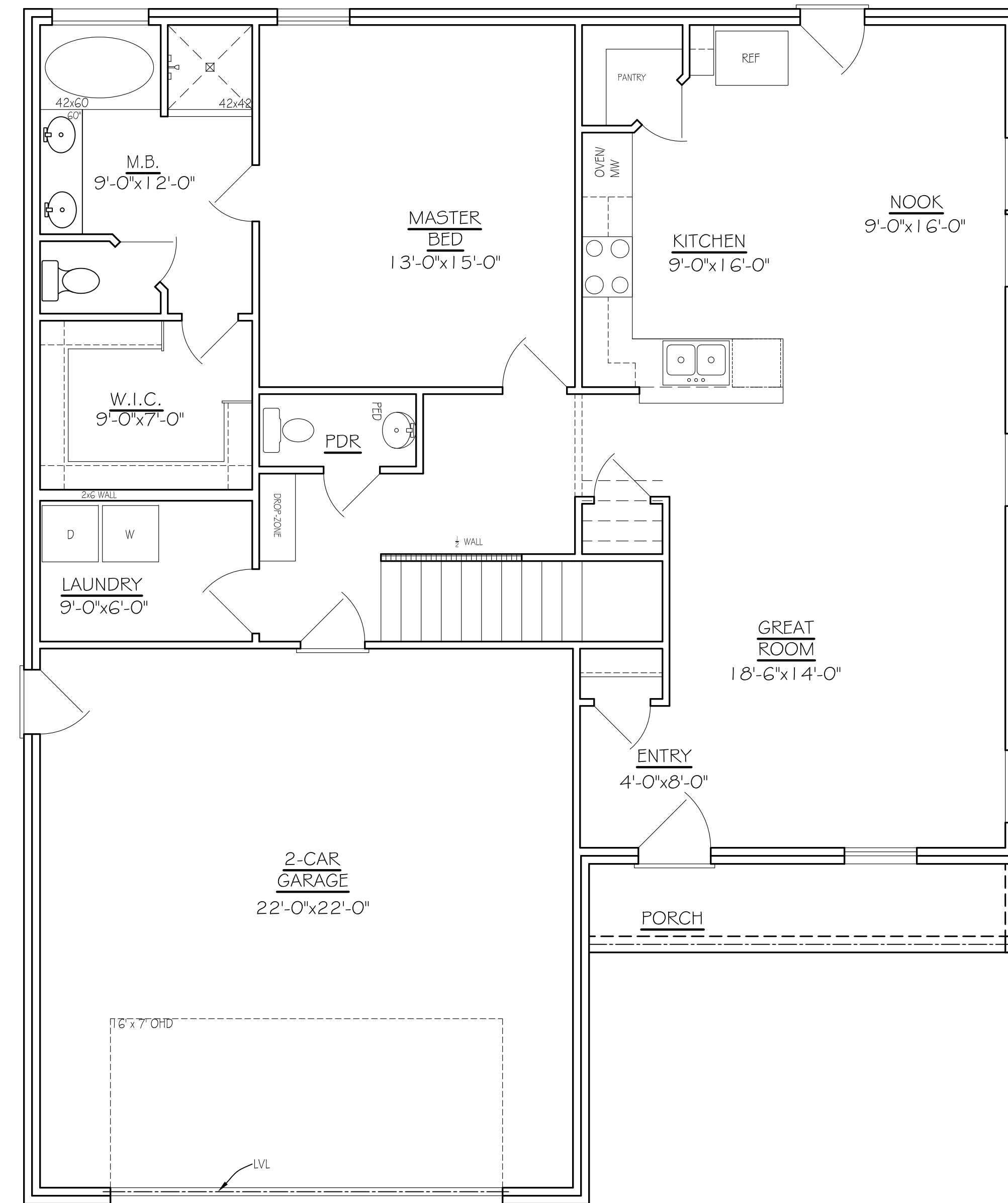
C:\Users\kca\Desktop\Logo.png

1980 Old Fort Pkwy
 Murfreesboro, TN 37129

DRAWN BY: DAVID INSLEY, ARCHITECT

ELEVATIONS

A.1



FIRST FLOOR PLAN

SCALE: 1/4" = 1'-0"

APPROX. AREA	
FIRST FLOOR LIVING	1246
SECOND FLOOR LIVING	1226
TOTAL HEATED	2474
GARAGE	513
FRONT PORCH	72
TOTAL COVERED	3059

OLD NASHVILLE HWY 6711
 LOT 5 (6719)
 SANTA MARIA +4B

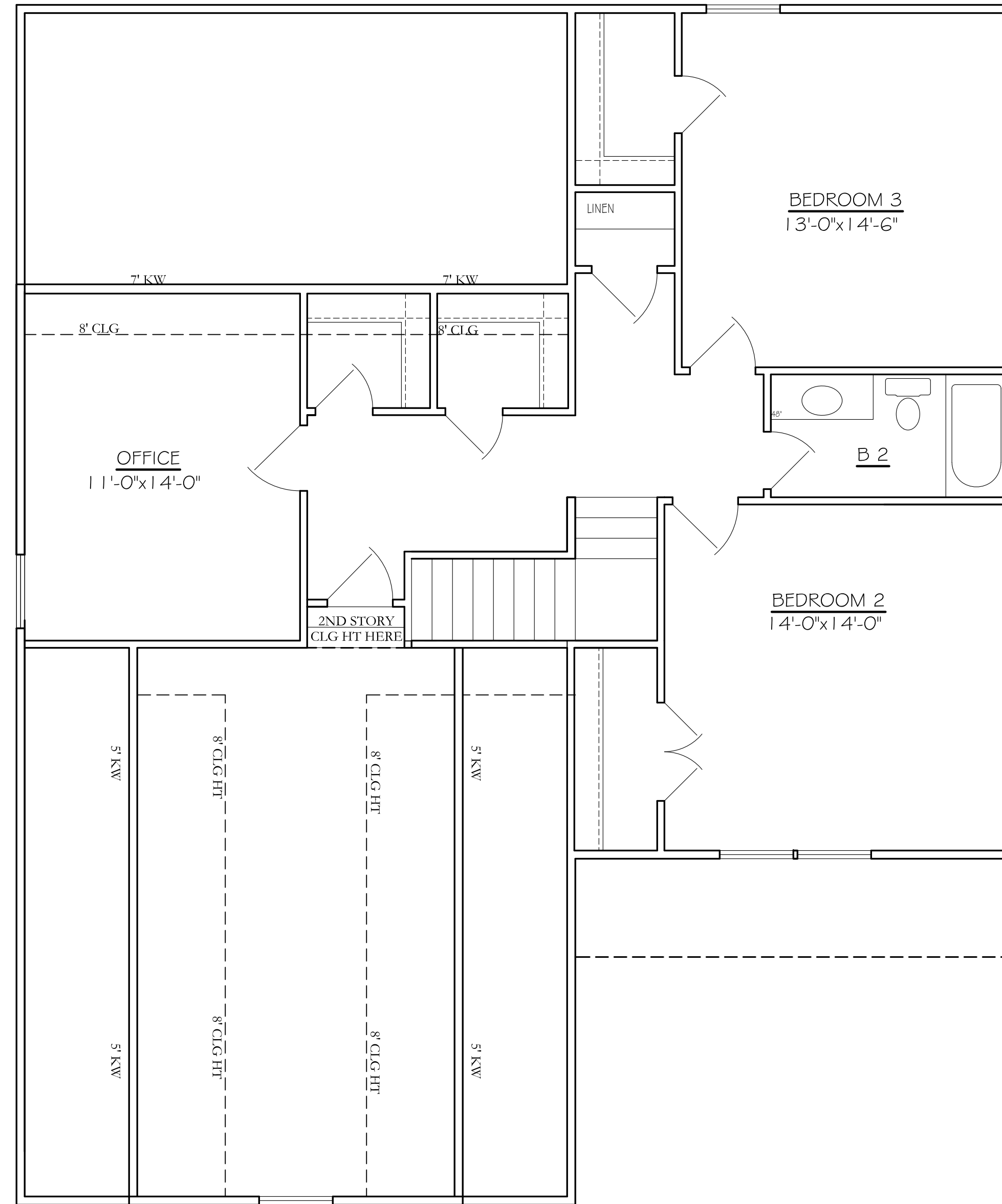
C:\Users\kca\Desktop\Logo\Logo.png
 1980 Old Fort Pkwy
 Murfreesboro, TN 37129
DRAWN BY: DAVE ISSUED: 06.21.17
REVISION

FLOOR PLANS

A.2

FRAMING NOTES

1. ALL EXTERIOR WALLS ARE 4" UNLESS OTHERWISE NOTED
2. ALL INTERIOR WALLS ARE 3/4" UNLESS OTHERWISE NOTED
3. ALLOW 4" BRICK POCKET IF APPLICABLE
4. CEILINGS: 1ST FLR: 9'-0"
2ND FLR: 8'-0"
5. ALL 1ST FLOOR WINDOWS ARE FRAMED @ 6'-8" HDR HT UNLESS OTHERWISE NOTED
6. ALL 2ND FLOOR WINDOWS ARE FRAMED @ 6'-8" HDR HT UNLESS OTHERWISE NOTED
7. ALL ANGLES ARE 45 DEG. UNLESS OTHERWISE NOTED



SECOND FLOOR PLAN

SCALE: 1/4"=1'-0"

OLD NASHVILLE HWY 6711
 LOT 5 (6719)
 SANTA MARIA +4B

C:\Users\kca\Desktop\Logo\Logo.png

1980 Old Fort Pkwy
 Murfreesboro, TN 37129

DATE ISSUED: 06/24/21

DRAWN BY: **REVISIONS**

FLOOR PLANS

A.3